

Grace

THE VINTAGE COLLECTION

Grace

THE VINTAGE COLLECTION

Grace is all about storytelling. Stories of the past. Stories told to you by your mother, grandmother and greatgrandmother. Stories of strong women, that tell the tale of an era.

The vintage Grace Collection weaves all these stories together in familiar patterns of decades past. Timelessly elegant, the designs evoke a sense of class and sophistication in any setting.

Take a trip down memory lane with Coralia, Louvinia, Seraphina, Celestia, Ludmilla and Alethea.



Grace

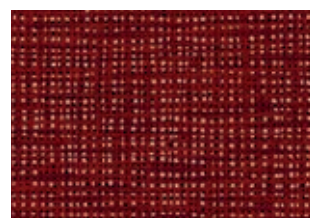
THE VINTAGE COLLECTION

- 06 Coralia
- 10 Louvinia
- 16 Seraphina
- 20 Celestia
- 26 Ludmilla
- 30 Alethea
- 36 Colour overview
- 37 Technical Specifications

Coralia

All personal recollections are made up of crisscrossing memories. Woven together, like the colours in this pattern, memories are never unequivocal. Coralia's versatile design tells a new story in every room. Can you hear it?

N°15



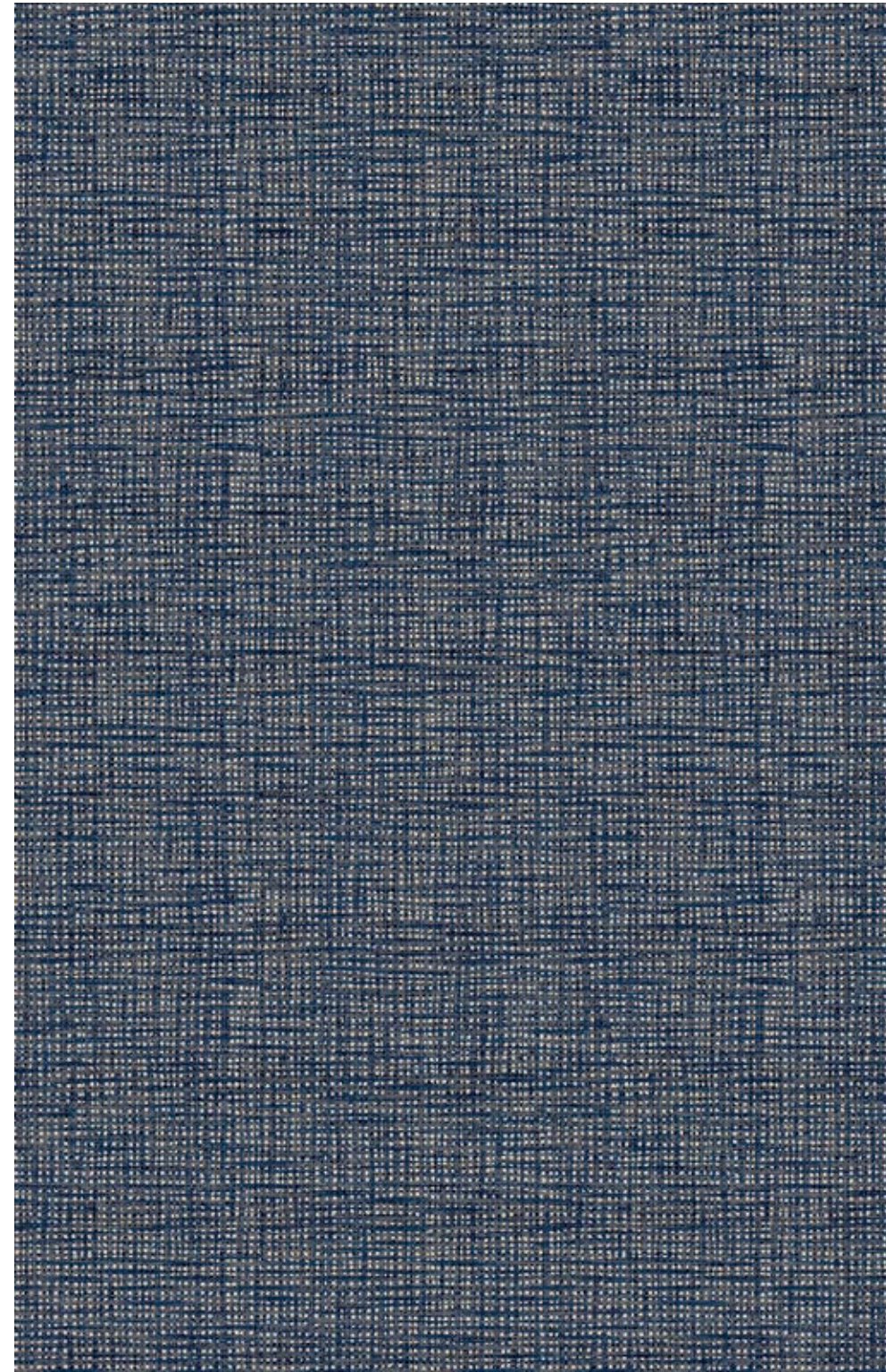


Coralia

N°15



N°73



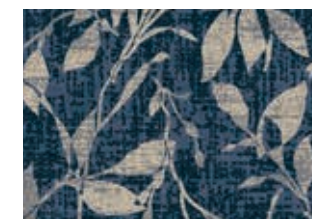
ACTION BACK 400 CM
100% PA 6 IMPREL®
↔ 98 X ↓ 95 CM



Louvinia

A window to the past. An escape from the hustle & bustle of modern-day life. A one-way ticket back to a simpler place and time. Embrace the relaxed retro feel of Louvinia. A two-toned floral design with an authentic vintage charm.

N°73



N°34



Louvinia

N°73



ACTION BACK 400 CM
100% PA 6 IMPREL®
↔ 98 X ↓ 95 CM



COMBINE LOUVINIA & CORALIA



Seraphina

Memories come in many forms: stories, pictures, fabrics ... Just like a painting opens the door to another world, Seraphina's sophisticated checker pattern offers a glimpse into a mirror reflecting another time.

N°92



Seraphina

N°92



ACTION BACK 400 CM
100% PA 6 IMPREL®
↔ 196 X ↓ 190 CM

N°43





Celestia

Time is the one thing we can never have enough of. Create a place where time stands still with this luxurious, baroque statement piece. Celestia, an everlasting design to be cherished for generations to come.

N°43



Celestia



N°43



N°32



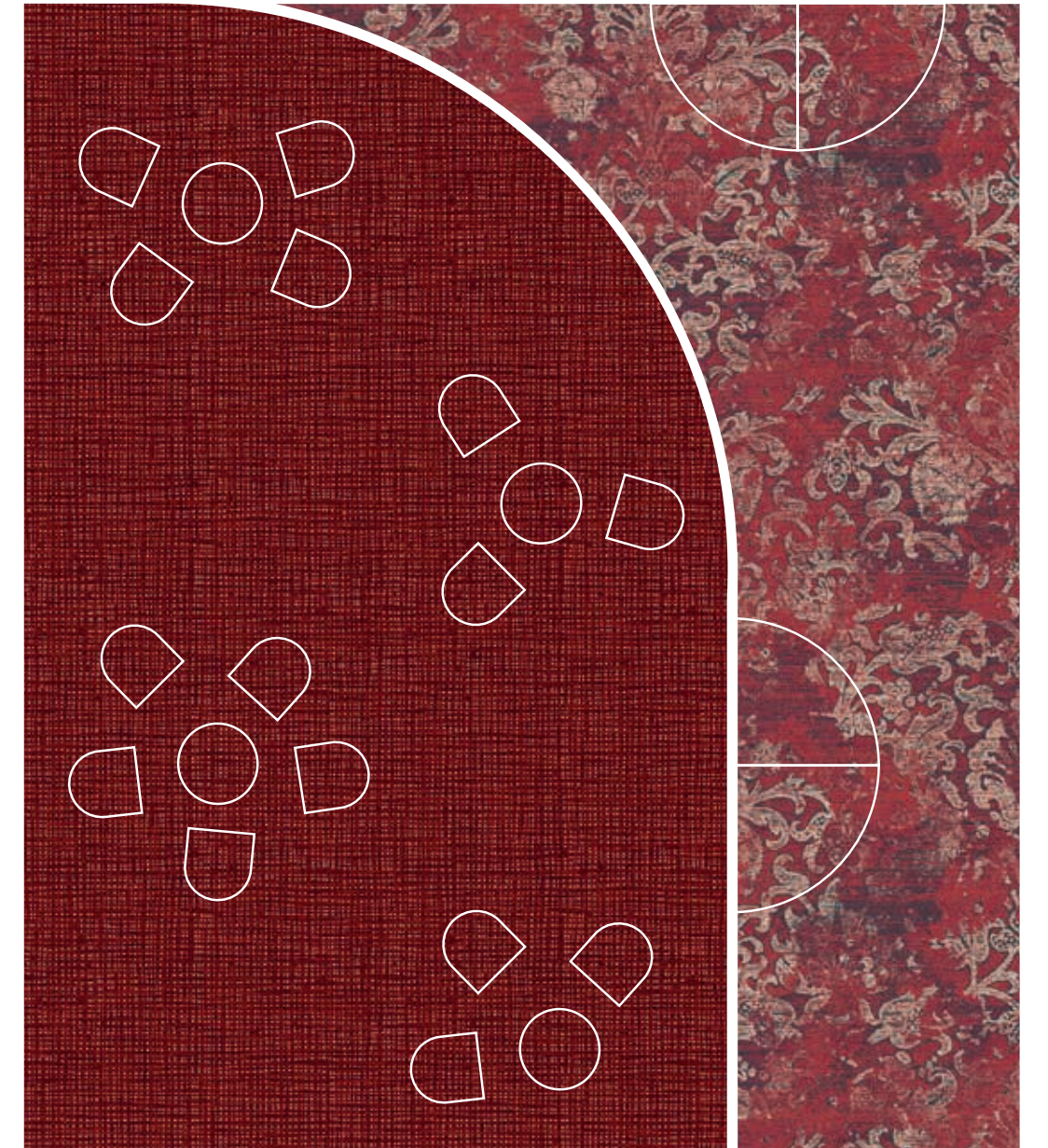
N°15



ACTION BACK 400 CM
100% PA 6 IMPREL®
↔ 196 X ↓ 190 CM



COMBINE CELESTIA & CORALIA



Ludmilla

The past is such a curious creature. The lines of the Ludmilla pattern run like the lines of a family tree, revealing connections between past and present. Contemporary meets vintage in this modern-day barcode design in various retro hues.

N°92





Ludmilla

N°92



N°73



N°15



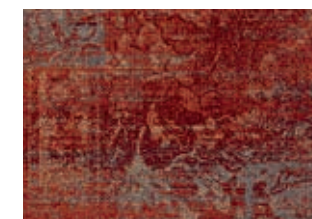
ACTION BACK 400 CM
100% PA 6 IMPREL®
↔ 50 CM



Alethea

An empty room holds a number of potential narratives. A storage of endless possibilities of colour and form. Alethea tells a tale of rich tones and arabesque shapes: a vibrant patchwork of material memories.

N°14



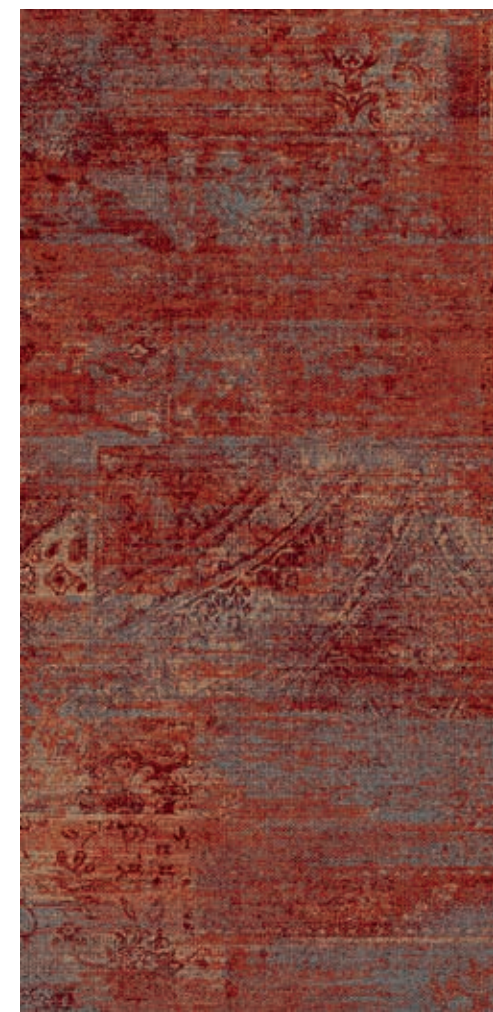
Alethea



N°32



N°14



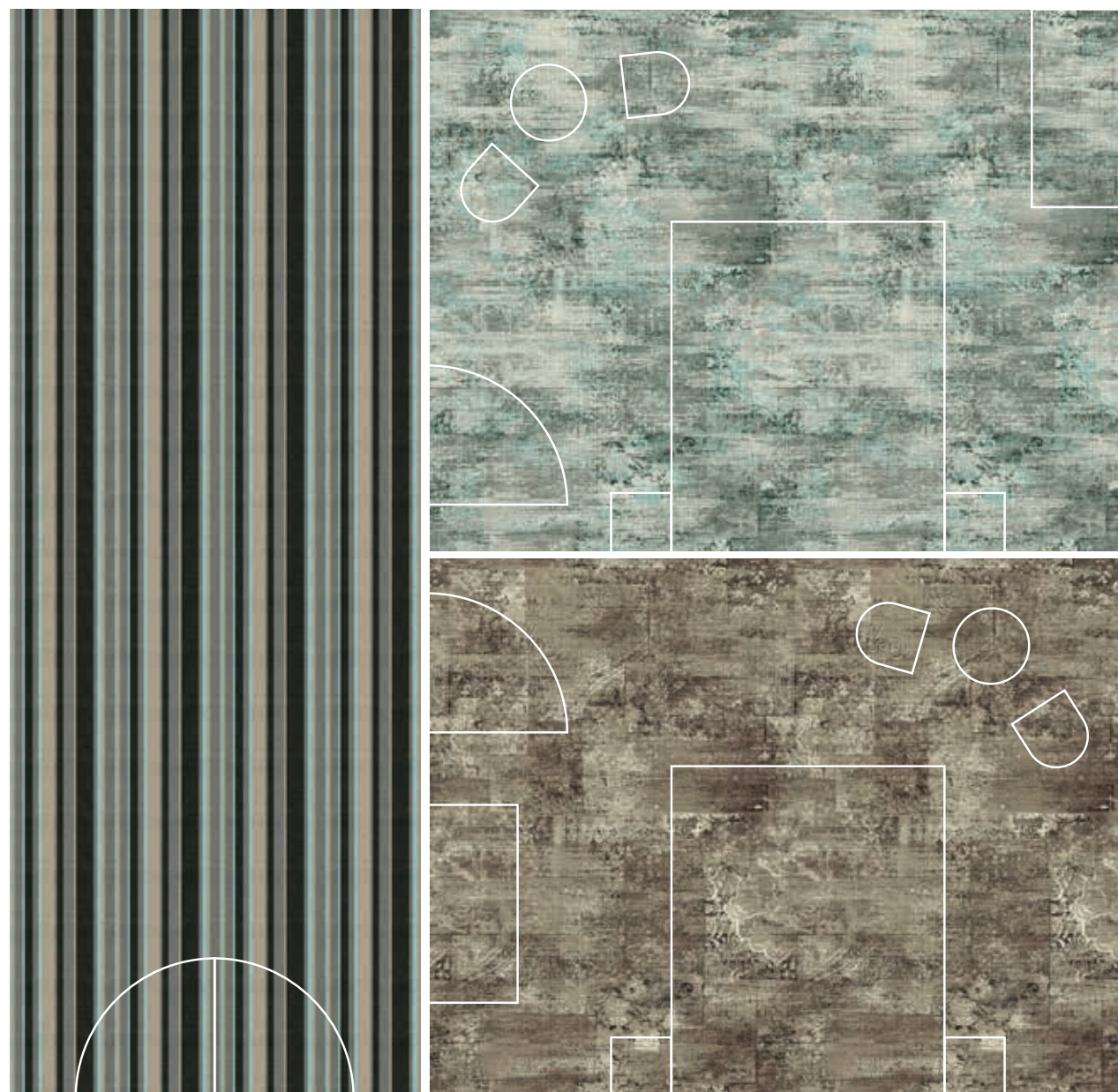
N°43



N°79



COMBINE ALETHEA & LUDMILLA



SERAPHINA N°43
SEE PAGE 19



ALETHEA N°43
SEE PAGE 33



LOUVINIA N°34
SEE PAGE 12



CELESTIA N°43
SEE PAGE 22



CORALIA N°73
SEE PAGE 9



LOUVINIA N°73
SEE PAGE 13



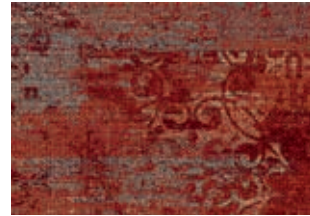
ALETHEA N°79
SEE PAGE 33



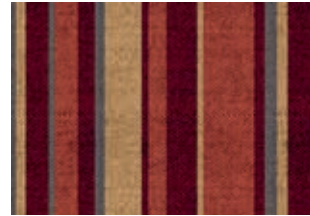
LUDMILLA N°73
SEE PAGE 29



ALETHEA N°14
SEE PAGE 33



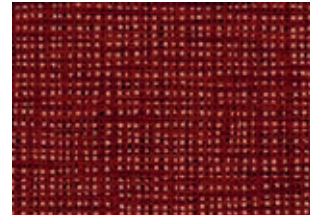
LUDMILLA N°15
SEE PAGE 29



CELESTIA N°15
SEE PAGE 23



CORALIA N°15
SEE PAGE 8



CELESTIA N°32
SEE PAGE 23



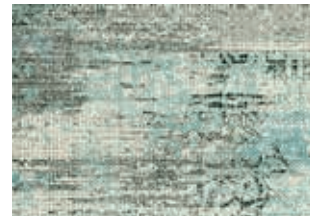
SERAPHINA N°92
SEE PAGE 18



LUDMILLA N°92
SEE PAGE 28



ALETHEA N°32
SEE PAGE 32



CONSTRUCTION

Tufting 1/10" loop pile

PILE MATERIAL

100% PA 6 IMPREL®

PRIMARY BACKING

Non woven PES

SECONDARY BACKING

Action Back

PILE WEIGHT

Ca. 640 gr/m²

TOTAL WEIGHT

Ca. 1.711 gr/m²

PILE HEIGHT

Ca. 3,1 mm

TOTAL HEIGHT

Ca. 5,8 mm

TUFT DENSITY

Ca. 218 400/m²

PILE DENSITY

Ca. 0.118 g/cm³

CLASSIFICATION

EN 1307

33 - LC1

CASTOR CHAIR SUITABILITY

EN 985

A: intensive use

STAIR SUITABILITY

EN 1963

A: intensive use

PERMANENTLY ANTISTATIC

ISO 6356

< 2 kV

IMPACT NOISE RATING

ISO 140-8

25 dB ΔLw

SOUND ABSORPTION

ISO 354

0.15 aw

THERMAL RESISTANCE

ISO 8302

0.07 m² K/W

FASTNESS TO LIGHT

ISO 105-B02

≥ 5-6

COLOUR FASTNESS TO WATER

EN ISO 105-E01

≥ 4-5

RUBBING FASTNESS

EN ISO 105-X12

≥ 4

FIRE RESISTANCE

EN 13501-1

Cfl-s1

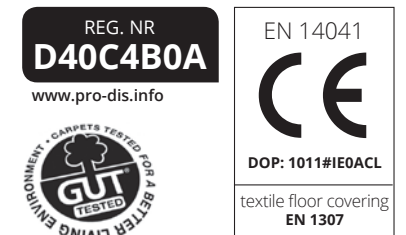
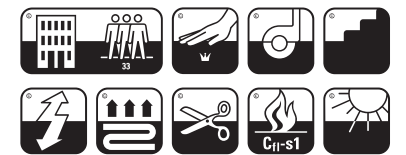
NUMBER OF COLOURS

16

WIDTH

EN ISO 3018

Ca. 400 cm



A photograph of a room with a fireplace mantel. The mantel is made of dark wood and supported by ornate, light-colored stone columns. The fireplace opening is recessed into a white wall. On the floor, there are several rolls of carpeting in various colors and patterns, including a blue and white floral pattern, a red and white floral pattern, and a striped pattern. A window with a wooden frame is visible on the right wall.

**Ready to write your own story?
Let's talk!**

 **arc edition**[®]
performance flooring
by Balta

Balta Industries nv - Division ITC
Kanegemstraat 15 - B-8700 Tielt - Belgium
T +32 (0)51 42 44 11 - F +32 (0)51 42 44 85
info@arcedition.com - www.arcedition.com



Balta Industries nv - Division ITC
Kanegemstraat 15 - B-8700 Tielt - Belgium
T +32 (0)51 42 44 11 - F +32 (0)51 42 44 85
info@arcedition.com - www.arcedition.com

